



APPLIED RESEARCH LABORATORIES  
TESTED TO MEET ANSI/UL555C  
ARL LISTING NO. 30123

MINIMUM	MAXIMUM	OUTLET	HEIGHT
6" X 6"	18" X 18"	4" - 8"	11 1/2"

**PARTS:**

- REGISTER BOX BODY  
(28 GAUGE ASTM A-653 HOT-DIPPED GALVANIZED STEEL SHEET)
- R4.2 OR R6 BLACK DIFFUSER BOARD  
(PRE-INSTALLED)
- FACTORY INSTALLED COLLAR
- 1" MOUNTING FLANGE
- 1/2" DRYWALL LIP
- MODEL 615 FIRE BLADE  
(22 GAUGE ASTM A-653 HOT-DIPPER GALVANIZED STEEL SHEET)
- MODEL 615 UL LISTED FUSIBLE LINK  
(165°F STANDARD, 212°F OPTIONAL)
- MODEL 615 FRAME  
(22 GAUGE ASTM A-653 HOT-DIPPED GALVANIZED STEEL SHEET)

**FEATURES:**

1 HOUR RATING FOR USE IN FLOOR/CEILING DESIGNS  
L-521, L-528 and L-546.

CONFORMS TO NFPA 90A AND NFPA 92A.

DESIGNED FOR INSTALLATION THROUGH WOOD OR  
GYPSUM CEILINGS. CAN BE MOUNTED DIRECTLY TO  
TRUSSES OR SUSPENDED.

EACH BOX IS IDENTIFIED WITH AN ARL LABEL AND A  
MTI IDENTIFICATION PLATE.

INSTALLATION INSTRUCTIONS PROVIDED IN EVERY  
PACKAGE.

PRE-INSULATED WITH R4.2 OR R6 BLACK DIFFUSER  
BOARD.

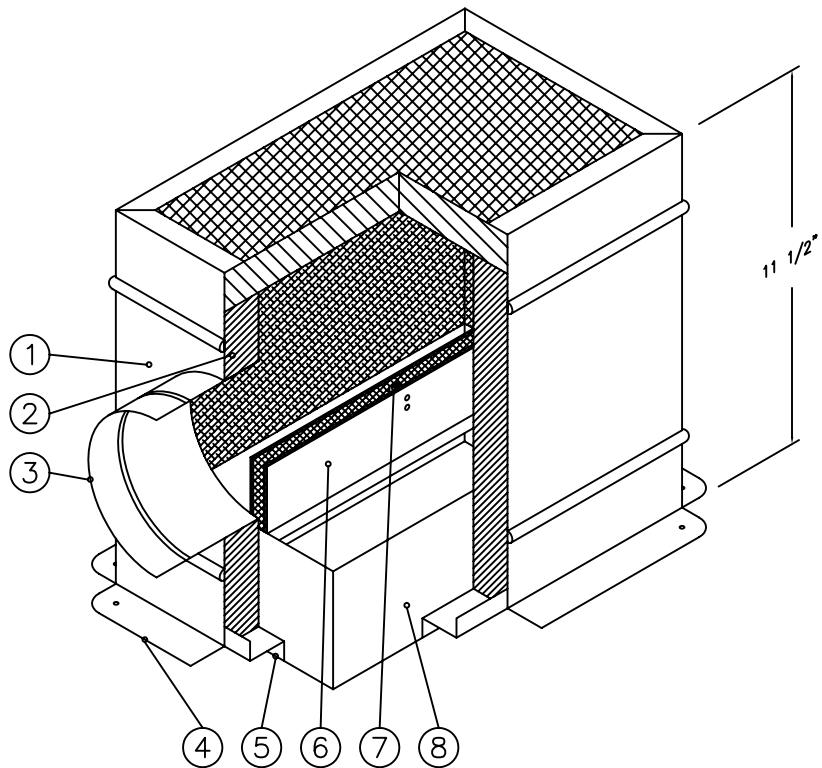
PRE-INSTALLED RADIATION DAMPER.

NO ASSEMBLY REQUIRED, READY TO MOUNT.

DUAL BEAD BOX DESIGN FOR ADDED STRENGTH.

SIDE OUTLET STANDARD.

OPTIONS: CUSTOM SIZES AVAILABLE



JOB NAME:
LOCATION:
ARCHITECT:
ENGINEER:
CONTRACTOR:
CONTACT MIAMI TECH INC. FOR ADDITIONAL INFORMATION OR WITH SPECIAL REQUIREMENTS.
3611 NW 74TH ST MIAMI, FL 33147 PHONE: 305-693-7054 FAX: 305-693-6152
WEB: WWW.MIAMITECH.COM EMAIL: SALES@MIAMITECH.COM

**R4/R6521**

CEILING RADIATION DAMPER BOX ASSEMBLY  
PRODUCT SPECIFICATIONS

NOTE: ALL DRAWINGS SUBJECT TO CHANGE WITHOUT PRIOR NOTICE.



DRAWN BY: AF	DATE: 2/05/08	SCALE: NOT TO SCALE	DRAWING NO. 521
CHECKED BY: IG	DATE: 2/05/08	REVISION: 1	