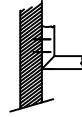
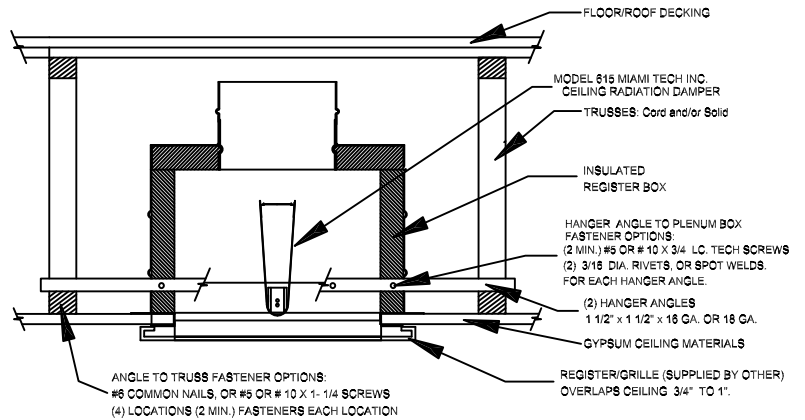
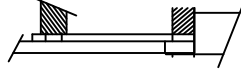




OPTIONAL
90°FORMED ANGLE ENDS
FOR SIDE FASTENING
IN TRUSSES



OPTIONAL
FLUSH MOUNT INSTALLATION
DRIVE "S" LOCKS ON BOX
FLANGES IN PLACE OF HANGER
ANGLES



NOTES:

1. Before installing the damper, R6/R4RDB open the blades and hook the fusible link over the link catch on the opposite blade. Bend down the link catch to secure the link in position.
2. Measure the actual truss centers and add approx 6" to determine straight angle lengths. (2) required per box. When using the optional formed angle allow for adequate flanges at each mounting point and cut and bend the angles on both ends to 90 degrees or the appropriate angle required.
3. Establish the location of the gypsum flange and fasten the (2) hanger angles to the plenum box with (2) minimum # 8 x 3/4 sheet metal screws or 3/16 diameter rivets for each hanger angle spot welding or bolts. Four connections on each angle as a minimum.
Note: fastener positions must not interfere with the damper blade operation.
4. Mounting angles are fastened to joists or other structural members with a minimum of two fasteners for each mounting point using # 6 common nails or # 8 x 1-1/4" long screws.
5. The clearance between each side of the ceiling damper and the duct drop shall be 1/8 inch maximum.
6. Steel or Aluminum grille or diffuser to be attached to the duct drop or ceiling damper using # 8 sheet metal screws.

IMPORTANT:

FASTENERS MUST NOT INTERFERE WITH THE DAMPER BLADES OPERATION.

R6/R4RDB

CEILING RADIATION DAMPER WITH REGISTER BOX
ASSEMBLY
INSTALLATION INSTRUCTIONS

NOTE: ALL DRAWINGS SUBJECT TO CHANGE WITHOUT PRIOR NOTICE.



miami tech inc.

DRAWN BY: JR

DATE: 11/20/02

SCALE: NOT TO SCALE

DRAWING NO. RDB-10M

CHECKED BY: IG

DATE: 02/21/13

REVISION: D